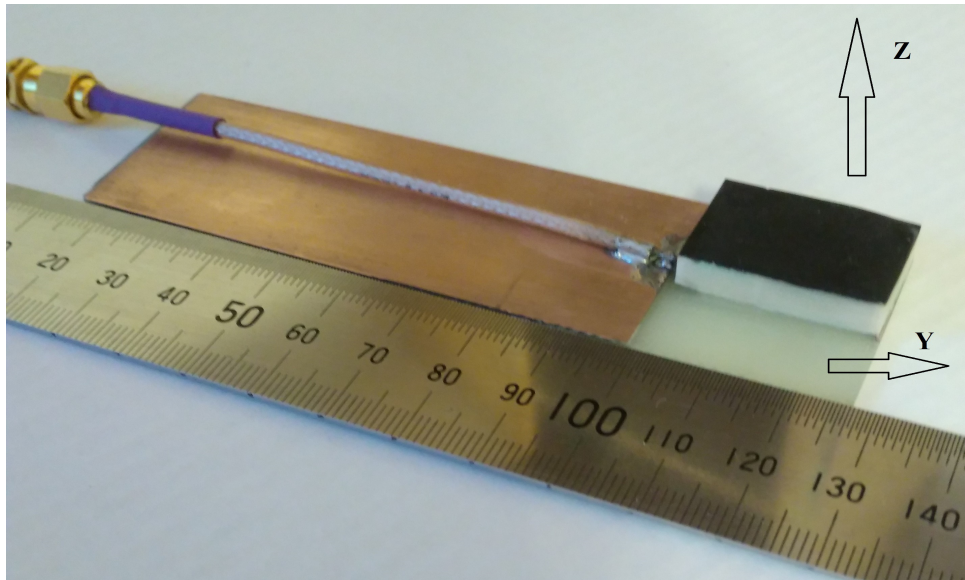


Low-profile ceramic cellular CHIP Antenna

*Compact, Light weight, Easy installation in a broad.
Range of wireless data and industrial applications*



Low- Profile **17.0x25.0x5.0mm**. Design for use with no ground beneath the antenna

1 Features

Polarization Linear

Pie chart

High gain (850MHz +2.2dBi 1900MHz +4.0 dBi)

High Efficiency (850MHz 95.9% 1900MHz 87.8%)

Operating temperature -60 °C to +95 °C

Impedance with matching 50 Ω

Weight 0.3 g

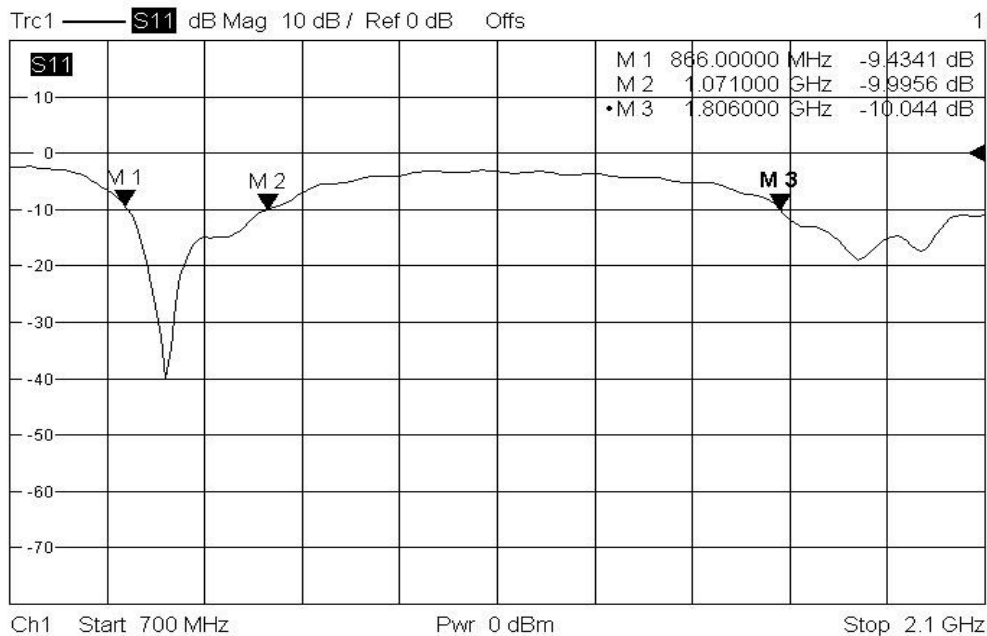
Antenna type SMD

2 Applications

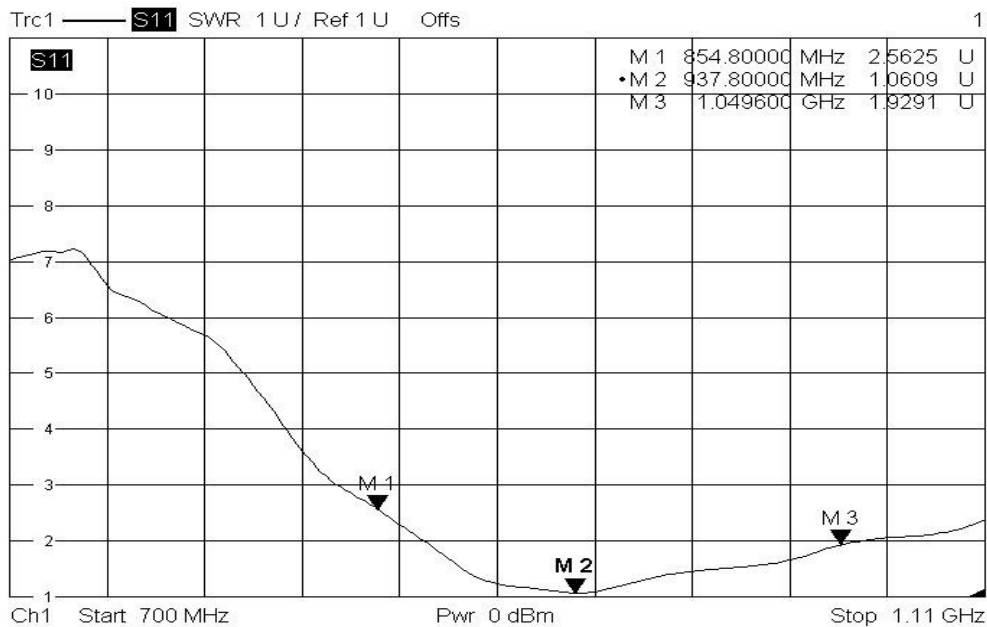
- Mobile phones
- PDAs
- PNDs
- Headsets
- PMPs / MP3s
- Laptops

3 Electrical performance

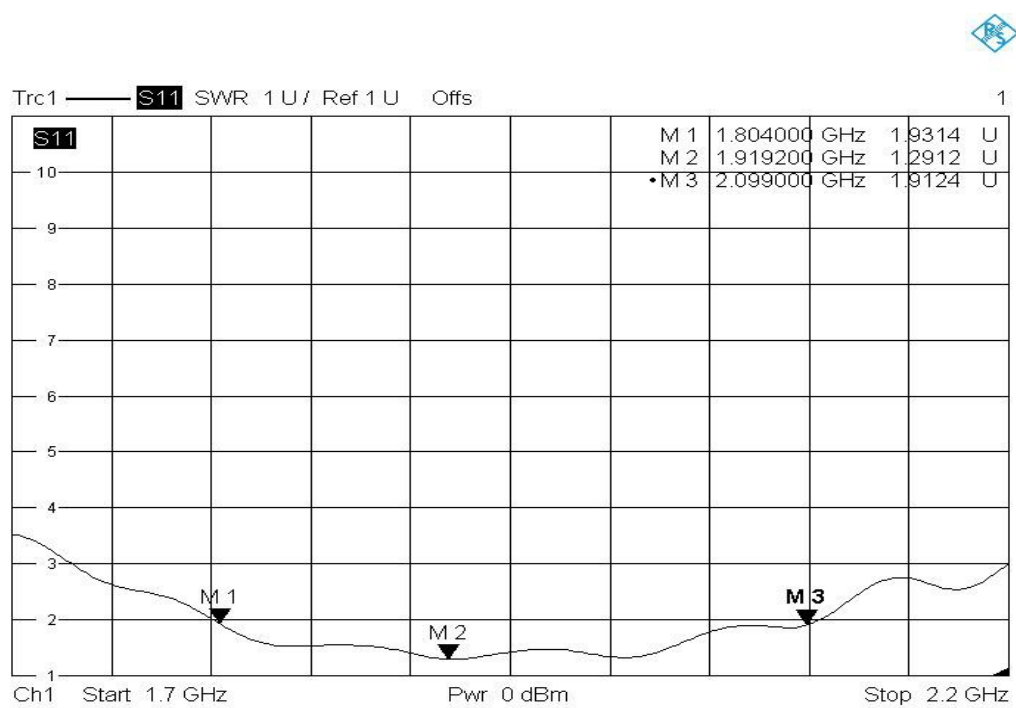
3-1 Return Loss, Full Bands



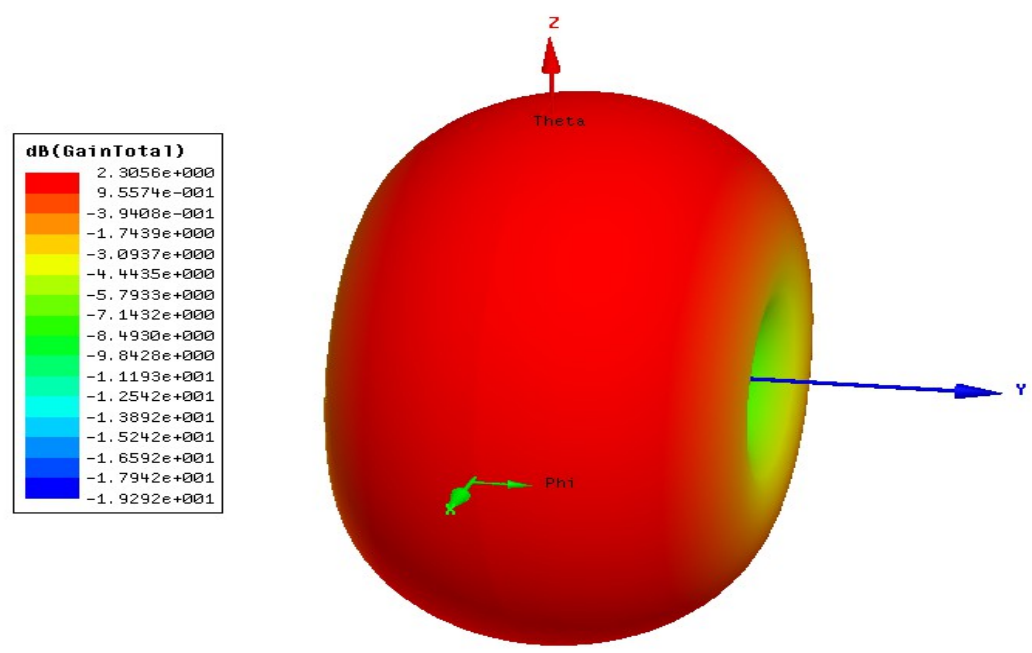
3-2 VSWR 850-1100MHz



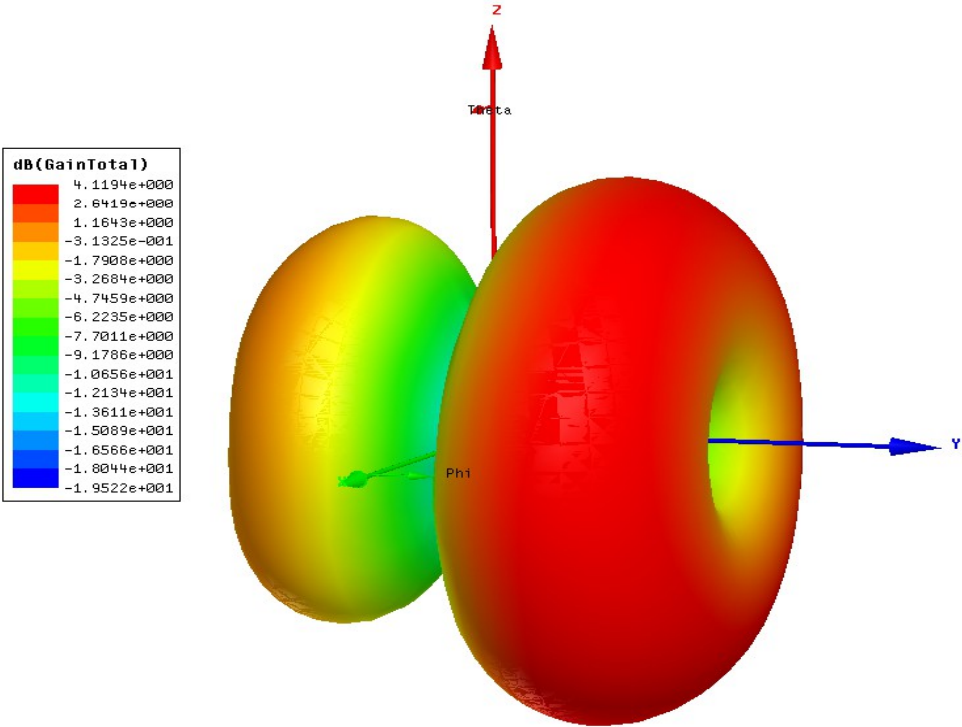
3-3 VSWR 1800-2100MHz



3-4 Antennas Pattern 890MHz



3-5 Antennas Pattern 1900MHz



4 Antenna dimensions and Pattern

