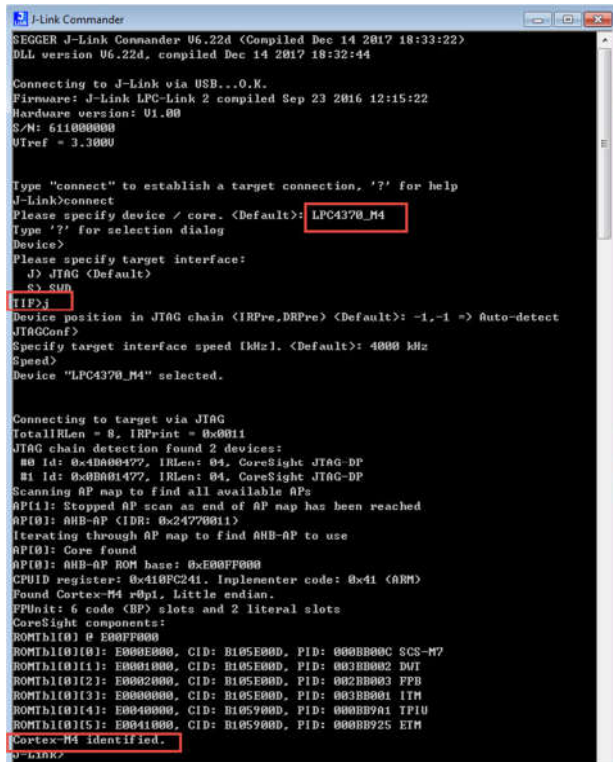


1. JLINK command check the JTAG or SWD connection



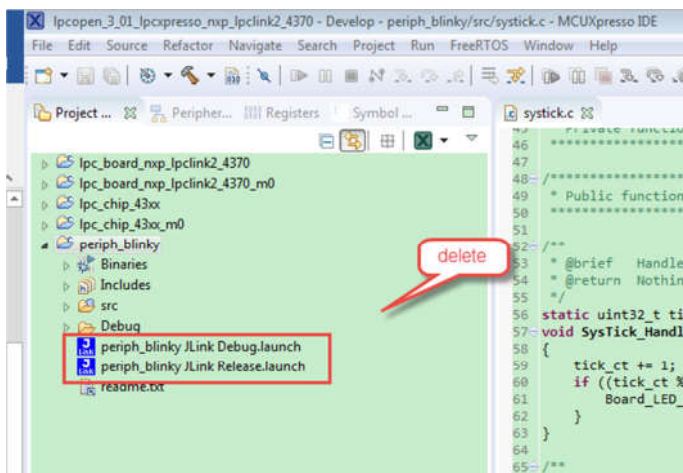
```
SEgger J-Link Commander U6.22d (Compiled Dec 14 2017 18:33:22)
DLL version U6.22d, compiled Dec 14 2017 18:32:44

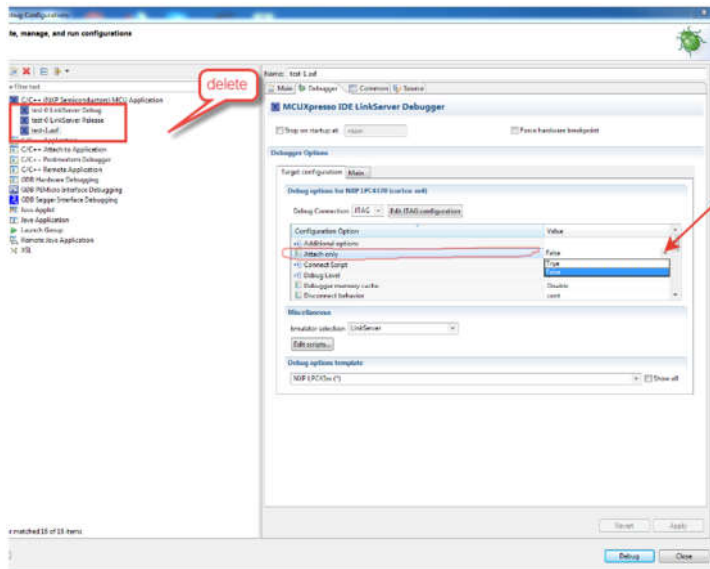
Connecting to J-Link via USB...OK.
Firmware: J-Link LPC-Link 2 compiled Sep 23 2016 12:15:22
Hardware version: V1.00
S/N: 611000000
Vref = 3.300V

Type "connect" to establish a target connection, '?' for help
J-Link>connect
Please specify device / core. <Default>: LPC4370_M4
Type '?' for selection dialog
Device>
Please specify target interface:
  0) JTAG (Default)
  1) SWD
[1]P>j
Device position in JTAG chain (IRPre,DRPre) <Default>: -1,-1 -> Auto-detect
JTAGConf>
Specify target interface speed [kHz]. <Default>: 4000 kHz
Speed>
Device "LPC4370_M4" selected.

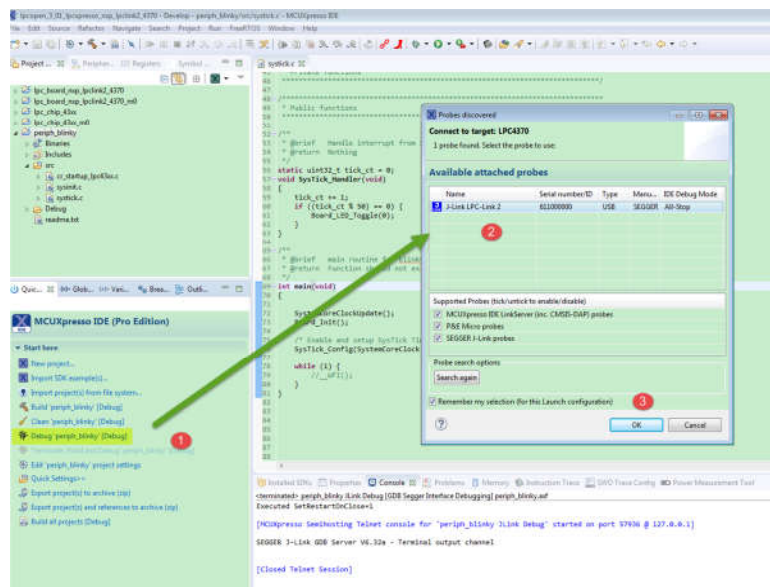
Connecting to target via JTAG
TotalIRLen = 8, IRPrint = 0x0011
JTAG chain detection found 2 devices:
  #0 Id: 0x4000477, IRLen: 04, CoreSight JTAG-DP
  #1 Id: 0x00001477, IRLen: 04, CoreSight JTAG-DP
Scanning AP map to find all available APs
AP[1]: Stopped AP scan as end of AP map has been reached
AP[0]: AHB-AP (IDR: 0x24770011)
Iterating through AP map to find AHB-AP to use
AP[0]: Core found
AP[0]: AHB-AP ROM base: 0xE00FF000
CPUID register: 0x410FC241. Implementer code: 0x41 (ARM)
Found Cortex-M4 v0pl, Little endian.
FPUnit: 6 code (BP) slots and 2 literal slots
CoreSight components:
ROMTbl[0] @ E00FF000
ROMTbl[0][0]: E000E000, CID: B105E00D, PID: 000BB00C SCS-M7
ROMTbl[0][1]: E0001000, CID: B105E00D, PID: 003BB002 DWT
ROMTbl[0][2]: E0002000, CID: B105E00D, PID: 002BB003 FPB
ROMTbl[0][3]: E0000000, CID: B105E00D, PID: 003BB001 ITM
ROMTbl[0][4]: E0040000, CID: B105900D, PID: 000BB9A1 TPIU
ROMTbl[0][5]: E0041000, CID: B105900D, PID: 000BB925 ETM
Cortex-M4 Identified.
J-Link>
```

2. delete the debug item in MCUXpresso IDE

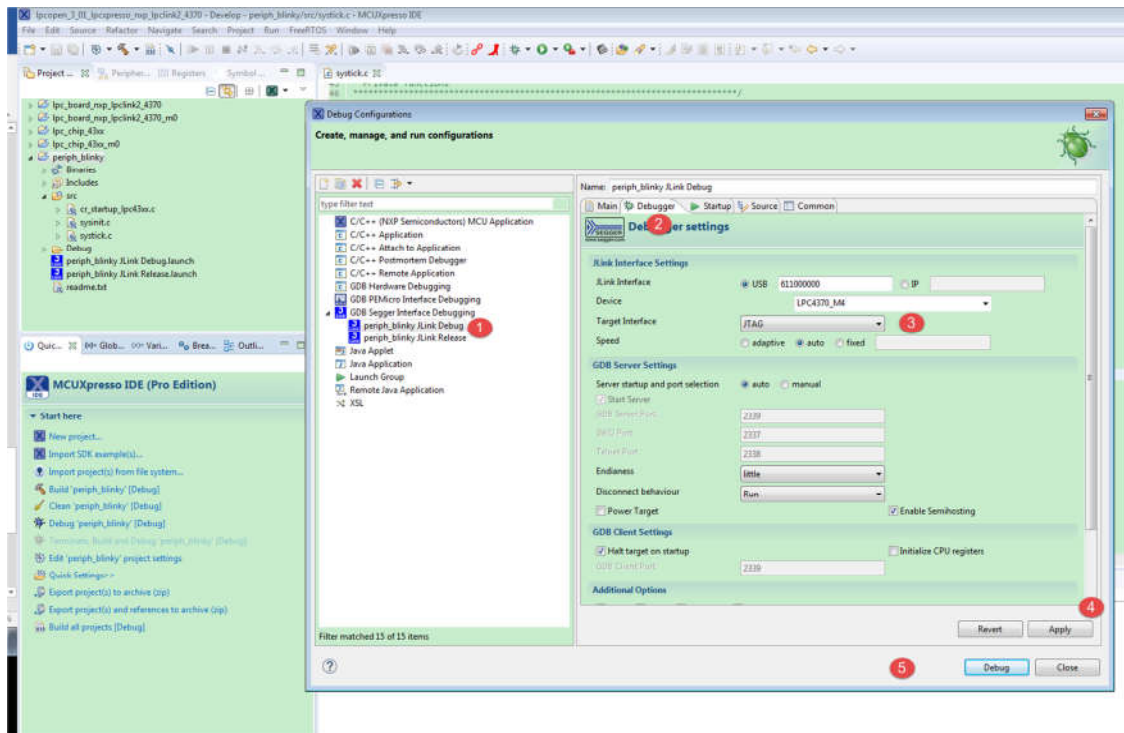




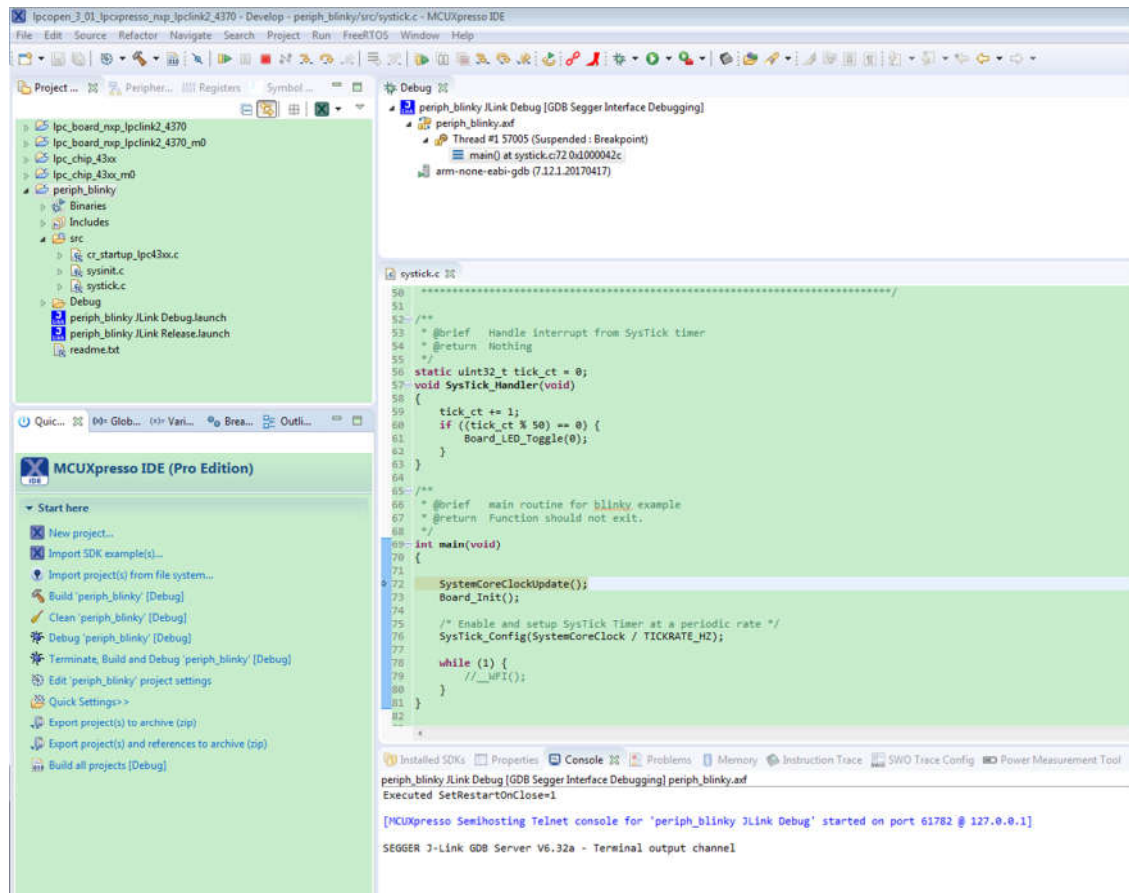
3. Build the project
4. Debug



It's default in SWD, if you want to use the JTAG. Open debug configurations window



You can find I can enter the debug mode with the JTAG



Please follow me to do it again.